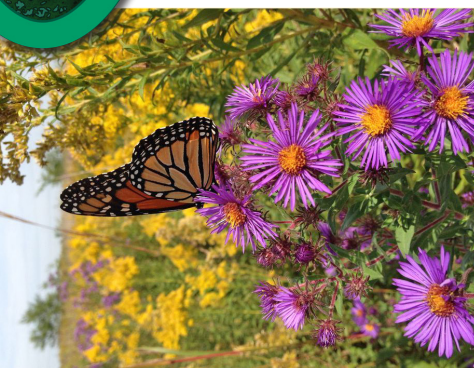




Mineette Layne/Wikimedia Commons



Roy Lukes



P.O. Box 702, Lee, MA 01238



"For the Love of Nature"
- Donato Cedrone

What is the Lee Land Trust?
We are an independent, non-profit, tax-deductible Trust founded in 1992 AND we are your neighbors! We want to preserve Lee's natural and historic heritage by working with individuals or organizations to protect their lands. We envision saving our farmlands, woods and water ways.

LeeLandTrust.org



Sunset on Laurel Lake



Co-Exist



Golden Hill with October Mountain in background

What We Offer

- Together with The Trustees, we protect more than 200 acres of land off Route 20 in East Lee. The Lee Land Trust, with the Berkshire Natural Resources Council (BNRC), is also a steward of 208 acres on Beartown Mountain in South Lee. Representatives from both organizations inspect the property each year. We have worked with others on preserving the prime farmland on Golden Hill.

- Our members work with other groups like: Lee Greener Gateway Committee (LGGC), the Appalachian Trail Community Application Committee, Lee Historical Society and the Town of Lee boards.
- We are especially pleased to offer a scholarship to a Lee High School senior who is continuing to explore studies in the environmental field.



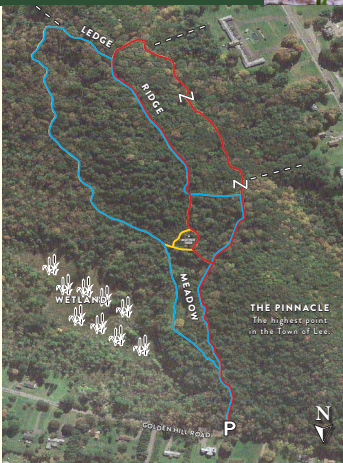
GOLDEN HILL TOWN FOREST

LEGEND

- 🅓 Parking
- Blue Loop Trail 1.3 mi.
- Red Loop Trail 1.1 mi.
- Blue and Red Shared Trail
- Mid Trail Loop with Mother Tree
- ⊞ Private Trail
- ⌄ Gate

TRAIL GUIDE

- Respect flora and fauna
- Tread lightly & leave no trace
- Dogs must be leashed. Pick up & carry out.
- Think ahead & be prepared for your own safety.
- Trail is uneven in places. Proceed with caution.



Donato's Trail, East Lee



C.E. Fennelly



This 70 acre property was once owned by George Westinghouse as part of his estate known as Erskine Park. His house was in Lenox near Laurel Lake (a neighbor of Edith Wharton) and his farmland extended across the road to the Golden Hill area. In 1939 George Westinghouse, Jr. donated this parcel to the Town of Lee.

This is truly an enchanted geologic world. Easy loop trails guide you through the boulders, ledges, outcrops, wildflowers and old trees. These are all season trails.

In the early 1960's this was a vibrant picnic spot with pavilion, stone fireplace and even electricity! Today, that area is the open field.

OPEN DAWN TO DUSK • NO FIRES • NO MOTORIZED VEHICLES

- Outdoor activities are important to us as a form of exercise and a chance for learning more about our natural surroundings.
- Please visit our website: leelandtrust.org to learn more about our history, find information about the woods and look for updates to our schedule of activities.

How You Can Help

BE AWARE of environmental changes here in Lee.

GET INVOLVED with activities & programs in town.

PARTICIPATE with us for work (Remove invasive plants -RIP) and enjoy seasonal outdoor walk. Read our Notes from the Woods on our website.

LET US KNOW what your thoughts are, suggestions for events or projects!

These beautiful places **NEED** stewards. Volunteers are their life blood. Join us in continuing to **PRESERVE, EDUCATE & INSPIRE** our neighbors and guests!